



# ECO-PA

TANKS FOR WATER TREATMENT

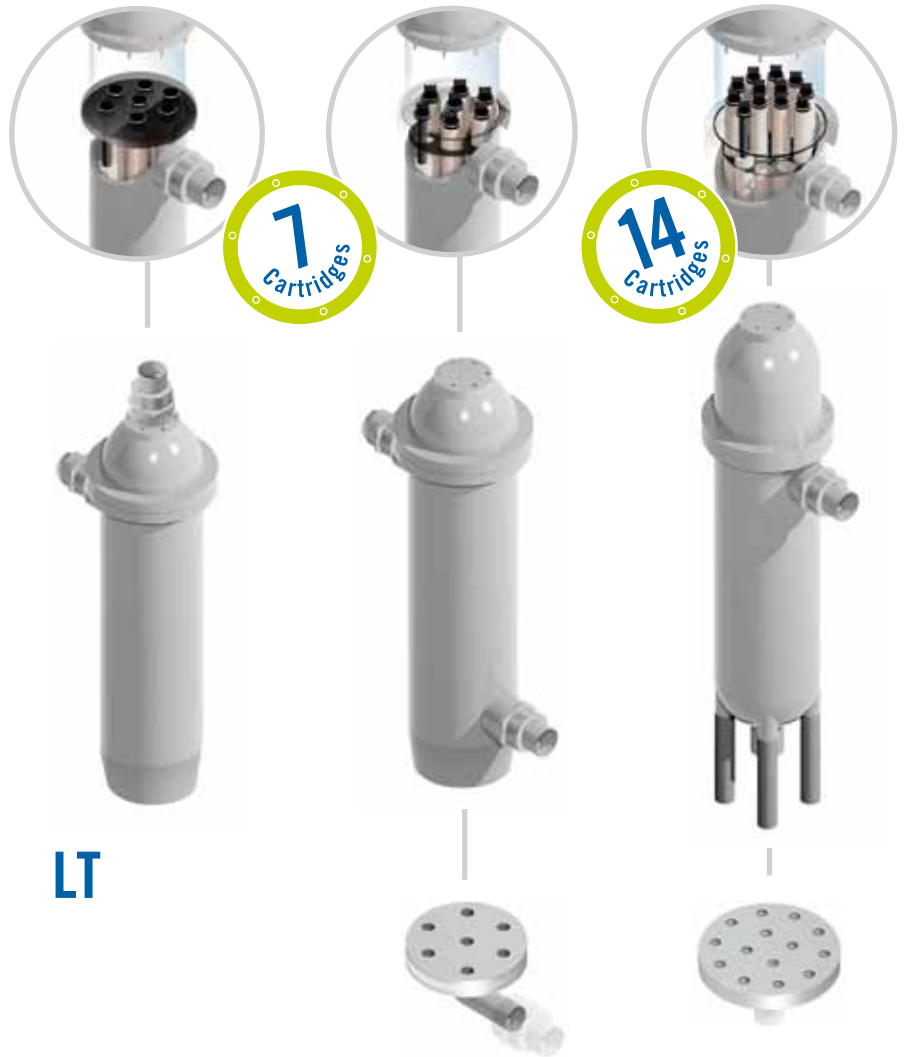


**100% RECYCLABLE  
BY DEPOLIMERISATION**  
P.C.R. PRODUCT CHAIN  
RESPONSABILITY.  
POST CONSUMER RECYCLE



**REDUCING THE  
CARBON FOOTPRINT**

# ECO-PA FILTERS



LT



| Type (inches) | Flow Range | N° Cartridges | Cartridge Type | Cartridge Length | Weight (Kg) |
|---------------|------------|---------------|----------------|------------------|-------------|
| 7x20          | 8-11       | 7             | 20" DOE        | 508              | 26          |
| 7x30          | 12-16      | 7             | 30" DOE        | 762              | 27          |
| 7x40          | 17-22      | 7             | 40" DOE        | 1016             | 28          |



| Type (inches) | Flow Range | N° Cartridges | Cartridge Type | Cartridge Length | Weight (Kg) |
|---------------|------------|---------------|----------------|------------------|-------------|
| 14x30         | 22-32      | 14            | 30" DOE        | 762              | 53          |
| 14x40         | 33-42      | 14            | 40" DOE        | 1016             | 54          |
| 14x50         | 43-56      | 14            | 50" DOE        | 1270             | 65          |

Customizable colors



# ECO-PA TANKS



100%  
Recyclable

| Type<br>(inches) | Vol.<br>(l) | Volume<br>Dome (l) | Weight<br>(Kg) |
|------------------|-------------|--------------------|----------------|
| 16x44            | 100         | 8                  | 25             |
| 16x65            | 150         | 8                  | 35             |
| 18x22            | 58          | 8                  | 25             |
| 18x72            | 250         | 8                  | 48             |
| 21X44            | 177         | 27                 | 33             |
| 21X62            | 258         | 27                 | 46             |
| 24x27            | 135         | 26                 | 31             |
| 24x34            | 190         | 26                 | 40             |
| 24X49            | 268         | 26                 | 51             |
| 24X64            | 366         | 26                 | 60             |
| 24X72            | 412         | 26                 | 65             |
| 30x31            | 240         | 64                 | 82             |
| 30x43            | 375         | 64                 | 95             |
| 30X49            | 407         | 64                 | 80             |
| 30X64            | 561         | 64                 | 90             |
| 30X72            | 614         | 64                 | 105            |
| 36x40            | 470         | 111                | 100            |
| 36X49            | 570         | 111                | 115            |
| 36X64            | 766         | 111                | 135            |
| 36X72            | 867         | 111                | 150            |
| 42X72            | 1295        | 202                | 242            |
| 48X50            | 1700        | 248                | 264            |
| 48X74            | 1700        | 248                | 320            |
| 60x74            | 2400        | 450                | 470            |

## Top & Bottom



## Options



## Top



## Connections available

- Pipe connections D63mm, or D90mm available.
- Threaded connection top 2"1/2, 4", 6"
- Slot sizes for nozzles and distributors, 0.2mm or 0.5mm.

MORE THAN **1250**  
**DESIGNS**  
(DELIVERY 2-10 DAYS)



# ECO-PA

## MODULAR HOUSING



HORIZONTAL

Also available for HFU, Nozzle plate or others



VERTICAL

| Cartridges Type DOE | N° Cartridges* | Flow Range* m³/h |
|---------------------|----------------|------------------|
| 30"                 | 21-45          | 30 - 95          |
| 40"                 | 21-45          | 50 - 130         |
| 50"                 | 21-45          | 63 - 160         |

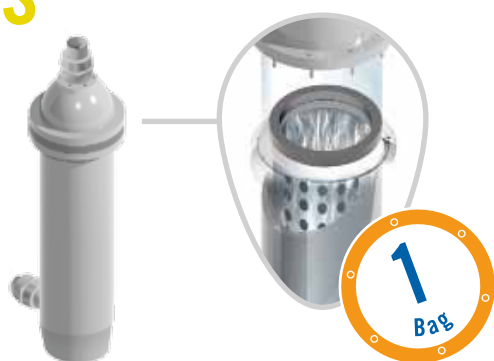
\*to be adjusted to plant requirements.  
Measures in mm

| Cartridges Type DOE | N° Cartridges* | Flow Range* m³/h |
|---------------------|----------------|------------------|
| 30"                 | 21-45          | 30 - 95          |
| 40"                 | 21-45          | 50 - 130         |
| 50"                 | 21-45          | 63 - 160         |

\*to be adjusted to plant requirements.  
Measures in mm

# ECO-PA

## BAGS



|                                     |
|-------------------------------------|
| Flow: 20 m3 / hour                  |
| N° Bags: 1                          |
| Bag Type: O- RING Ø 180 mm, L810 mm |
| Weight: 26 kg                       |
| Measures in mm                      |



|                                     |
|-------------------------------------|
| Flow: 80 m3/hour                    |
| N° Bags: 4                          |
| Bag Type: O-Ring Ø 180 mm, L 810 mm |
| Weight: 51 kg                       |
| Measures in mm                      |



## ECO-PA VESSELS

Flange Top Threaded  
4" 8UN or 2" 1/2 8NPSM  
Pressure vessels (10 bar)

Optional Done  
Opening



## ECO-PA PH

2" 1/2 8NPSM  
Portable pressure vessels (10 bar)  
with handles.



| Type<br>(inches) | 8x15 | 8x17 | 8x23 | 8x35 | 10x23 | 10x35 | 10x43 | 10x49 | 13x35 | 13x50 |
|------------------|------|------|------|------|-------|-------|-------|-------|-------|-------|
| Vol.<br>(l)      | 8.5  | 9.4  | 14.3 | 22.4 | 22.1  | 35.3  | 44.7  | 50.3  | 60    | 94.3  |
| D<br>(mm)        | 204  | 204  | 204  | 204  | 257   | 257   | 257   | 257   | 346   | 346   |

Top & Bottom available under request.

## ECO-PA PLUS

10 bar pressure tanks for water treatment.  
Threaded [Top] 4" 8UN or 2" 1/2 8NPSM connection.

Optional Done  
Opening

| Type<br>(inches) | Vol.<br>(l) | D<br>(mm) |
|------------------|-------------|-----------|
| 14 x 65          | 123         | 350       |
| 16 x 44          | 100         | 391       |
| 16 x 65          | 150         | 391       |
| 18 x 72          | 250         | 465       |
| 21 x 62          | 258         | 522       |
| 24 x 72          | 412         | 595       |
| 30 x 72          | 614         | 746       |

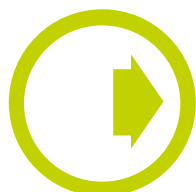


Customizable colors





# OUR HISTORY



www.pevasa.com

# 35 years

Researching  
Innovating  
Developing

## SANITARY

REGISTRO AGENCIA ESPAÑOLA



DVGW Technical Standar W270 - Filter Nozzle



ECO-PA ATTESTATION CONFORMITÉ SANITAIRE (ACS)



EUROPEAN DRINKING WATER DIRECTIVE



REGISTRE SANITARI D'INDUSTRIES



ATTESTATION DE CONFORMITÉ SANITAIRE (ACS) - Filter Nozzle



## PRESSURE

CONFORMITY WITH THE EUROPEAN PRESSURE EQUIPMENT



## QUALITY AND MANAGEMENT SYSTEM

CERTIFICATE OF PEVASA QUALITY ISO 9001:2008



# ECO-PA

TANKS FOR WATER TREATMENT

## Material properties

Polyamide 6  
Melting point: 220°  
Tensile Strength: 82 N/mm2  
Flexural Strength: 3300 N/mm2  
Recyclable by depolymerisation 100%  
Internal liner of ethylene acid copolymer

## Working conditions

Working Pressure: 10,5 bar / 150 psi  
Vacuum Resistant  
Maximum working temperature: 50 °C  
Minimum burst pressure: 42 bar / 600 psi  
Safety factor 4:1

## 2 YEARS WARRANTY

## DELIVERY DAYS 2-10



PRODUCTOS ESTRATIFICADOS  
DE VIDRIO, S.A.

C/ Almería, 31  
08226 Terrassa (Barcelona)  
España

Tel. (+34) 93 731 27 29  
Fax (+34) 93 731 44 04

MORE INFO:

[info@pevasa.com](mailto:info@pevasa.com)



Member of:

